



PLATFORM  
ON DISASTER  
DISPLACEMENT  
FOLLOW-UP TO THE NANSSEN INITIATIVE



Norad

# ACTION AND SUPPORT

## TO AVERT, MINIMIZE AND ADDRESS DISPLACEMENT RELATED TO THE ADVERSE EFFECTS OF CLIMATE CHANGE

All over the world, vulnerable people and communities are being affected by climate change. Displacement is an increasingly frequent consequence of sudden and slow-onset hazards associated with climate change. Displacement also has the potential to multiply and extend the risks people face, and the economic, social and environmental impacts they suffer. Making displacement, its costs and corresponding protection needs integral to all efforts to avert, minimize and address loss and damage induced by climate change should be a priority for all actors and at all levels.

## THE PROJECT



The Platform on Disaster Displacement (PDD) is a State-led initiative working towards better protection for people displaced across borders in the context of disasters and climate change. PDD is implementing the Project to Avert, Minimize and Address Disaster Displacement (PAMAD) in order to:

- ➔ develop a better understanding of displacement in the context of losses and damages associated with climate change
- ➔ support measures aimed at averting, minimizing and addressing displacement and its impacts for vulnerable people and communities.

### IMPLEMENTATION COUNTRIES

 **Bangladesh**

 **Fiji**

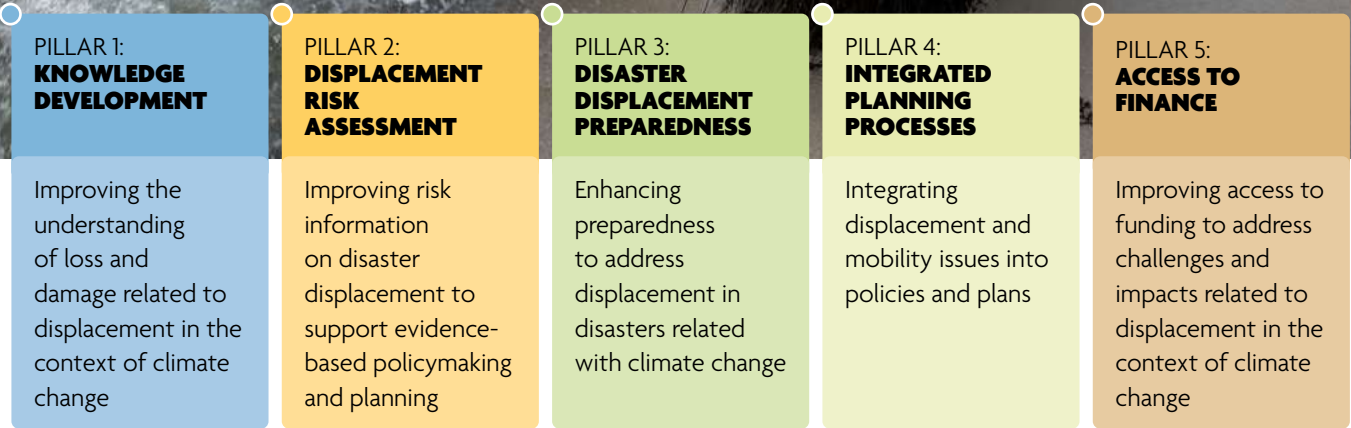
 **Guatemala**

 **Kenya (TBC)**

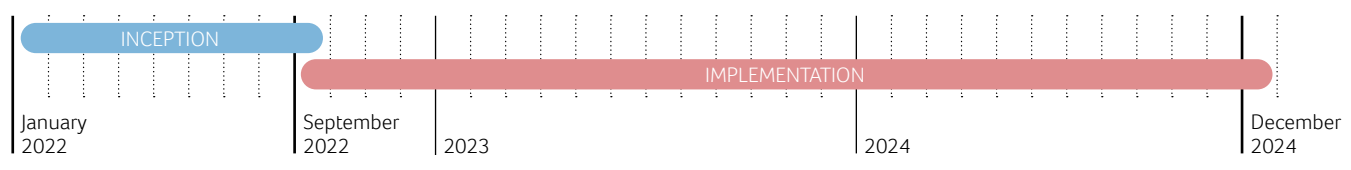
Each country faces specific challenges and impacts due to climate change and associated displacement. Through the project, partnerships will be built with both governmental and non-governmental actors.

### GLOBAL PARTNERS

- Climate Action Network (CAN)
- Displacement: Uncertain Journeys
- Lena Dobrowolska & Teo Ormond-Skeaping
- Norwegian Refugee Council, Internal Displacement Monitoring Centre/ (NRC/IDMC)
- International Centre for Climate Change and Development (ICCCAD)
- International Federation of Red Cross and Red Crescent Societies (IFRC)
- Office of the United Nations High Commissioner for Refugees (UNHCR)
- International Organization for Migration (IOM)
- United Nations Framework Convention on Climate Change Secretariat (UNFCCC)



**TIMELINE**



Displacement has been recognized as a global priority for climate change policy under the [United Nations Framework Convention on Climate Change](#) (UNFCCC), through the work the [Warsaw International Mechanism for Loss and Damage](#) (WIM) and its [Task Force on Displacement](#) (TFD), and the [Santiago Network for Loss and Damage](#) (SNLD). Improving understanding of the issue, strengthening relevant policy frameworks and institutional capacities, and promoting effective actions will require bringing together actors and resources across sectors, including disaster risk reduction, protection of human rights, governance of human mobility, development, and humanitarian, transition and recovery assistance.



**Contact information:**  
[www.disasterdisplacement.org](http://www.disasterdisplacement.org)  
[info@disasterdisplacement.org](mailto:info@disasterdisplacement.org)  
[LorenzoG@unops.org](mailto:LorenzoG@unops.org)



This project is made possible through the generous support of The Norwegian Agency for Development Cooperation (Norad).